



Case Study



Adelaide, South Australia

Adelaide is the capital city of the state of South Australia, and the fifth-most populous city of Australia.

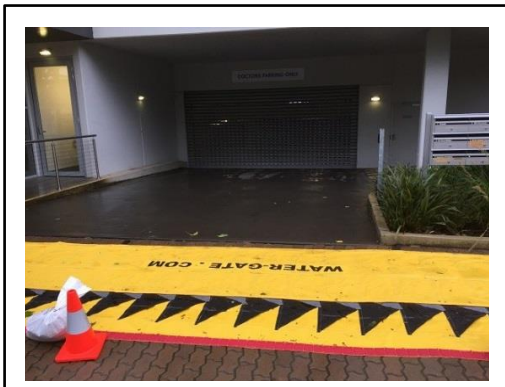
As South Australia's seat of government and commercial centre, Adelaide is the site of many governmental and financial institutions. Most of these are concentrated in the city centre and in various districts of the metropolitan area.

Responsible for the drain system and waterways, the Adelaide City Council urgently purchased Water-Gate barriers for a private building in Adelaide since it was obligated to provide protection against flooding. The barriers were set up around the building to protect the entrances.

This year, although there was heavy rain and floods across the State, the water did not raise high enough at this location to open the pre-deployed barriers.

This building had flooded a few times previously as it is in a low point adjacent to the parklands where storm water channels run through. When they overflow and the drains are blocked from leaves, the flooding occurs.

Hoping it will not flood again anytime soon, the Council is now ready to quickly respond to any flooding situations thanks to the Water-Gate barriers.



www.water-gate.com

 888.756.0222